



IMS CharacterGenerator Studio™ MX Pro

Product Sheet (www.IMS3D.com)

About IMS CharacterGenerator Studio™ MX Pro

IMS CharacterGenerator Studio™ MX Pro is a companion tool for Macromedia® Director® MX and MX 2004 that allows you to quickly and easily add animated **talking** 3D characters to your multimedia presentations created using Director®. This product is available for the professional multimedia developer. The tool Xtra works in the authoring mode of Director® MX and MX 2004, and publishes the resulting content directly to your Director® movie; including Lingo™ scripts, models, and audio. There is even an option to have the *Score* generated for you. And best of all, there are no additional Xtras™ to download for playback over the Web or from a DVD/CD-ROM.



IMS CharacterGenerator Studio™ MX Pro

New Features

- Unlimited Character Storage Capacity
- The New Shadow Maker
- Mouth Position/Lip Synch Exaggeration control
- Picture in Picture for 3D scenes
- Up to **Five Minute** Length Per Audio File
- Easier PIP functionality
- Texture modifier (for modifying the face)
- Background Images
- Set Play Time for “Slider style” control of playback
- Compressed IMS data format for better streaming

Using IMS CharacterGenerator Studio™ MX Pro

Using this product is simple and easy. By following the five easy steps below, you can create an animation can be posted to your web server or integrated into a CD-ROM presentation.

1. Select IMS CharacterGenerator Studio™ MX from the Xtras menu.
2. Select and Process an Audio File
3. Publish your currently active (saved) Director movie
4. Play your Director movie
5. Post your Director movie to your web server, or save to DVD/CD-ROM

The IMS CharacterGenerator Studio™ MX Pro application has a total of nineteen (19) function calls that allow you to specify an animation file to play, preload it, and control the playback sequence of the file. The API also allows you to trigger animation events in your presentation as well.

Shockwave Player: Playback Requirements

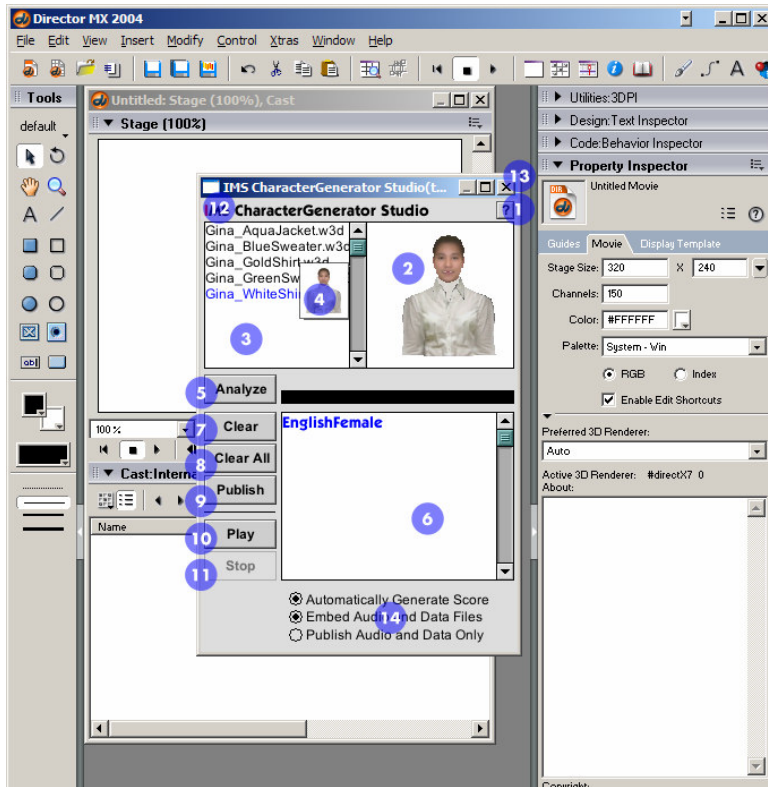
Windows	Macintosh Classic	Macintosh OS X
<ul style="list-style-type: none"> • Intel Pentium processor (Pentium II or higher recommended) • Netscape 4.0 or later • Microsoft Internet Explorer 4.5 or later • AOL 4.0 or later 	<ul style="list-style-type: none"> • Power Macintosh Power PC processor (G3 or higher recommended) • Netscape 4.0 or later • Microsoft Internet Explorer 4.5 or later • AOL 4.0 or later 	<ul style="list-style-type: none"> • Power Macintosh G3 running OS 10.1.2 or later • Microsoft Internet Explorer 5.1 or later



IMS CharacterGenerator Studio™ MX Pro Product Sheet (www.ims3d.com)

User Interface:

The Graphic User Interface (GUI) for the IMS CharacterGenerator Studio™ MX product is very simple to navigate.



1. **Help** button- click this button to access this manual at any time.
2. **Selected Character Model** - displays and animates the head model selected from the **Model** directory. The selected head will be published during the publishing process.
3. **Character Selection List** - click on a character to select it from the characters found in the **Model** directory.
4. **Character Thumbnail View** - displays a thumbnail of the character currently under the mouse pointer.
5. **Analyze** button - click this button to select and process an audio file of type .WAV. You also have the option of processing all of your audio files in a single folder in "batch" mode.
6. **List of Processed Audio Files** - a scrollable list of all of the audio files you have processed in each session. You can select audio files to be played and cleared from this list.
7. **Clear** button - this button clears the currently selected audio file from the list of processed audio files.

8. **Clear All** button - this button clears all of the audio files from the list of processed audio files.
9. **Publish** button - this button publishes all of the processed audio files in the list of processed audio files, the selected head model and all of the required Lingo code to the currently active and saved Director MX movie.
10. **Play** button - this button plays the currently selected audio file in the list of processed audio files
11. **Stop** button - this button stops any audio file currently playing.
12. **IMS Web Site** - click here to launch the IMS website in your default browser if you are connected to the Internet.
13. **Close** button - this button closes the IMS CharacterGenerator Studio™ MX ProTool Xtra and the active session
14. **Publishing Preferences** - If this is your first time publishing, it is recommended you leave the top two options checked. If you have already published you can select which option not to use, or select publish audio and data only if you are just processing audio files and have already published the required Lingo scripts.

Hardware and Software Requirements

The minimum hardware and software requirements for using this product are:

- Macromedia® Director® MX or Director® MX 2004 installed
- Microsoft® Windows 98, 2000, NT 4.0 or later, or XP
- Intel Pentium II processor class or better
- 32MB of RAM
- 20MB of available disc space, a color monitor, a microphone for recording audio, and a sound card.

IMS Character Content

IMS CharacterGenerator Studio™ MX includes two (2) "stock" character models. Each, high quality, head model works seamlessly with the IMS CharacterGenerator Studio™ MX, simply select the head you want to use, and it speaks the audio you select. You can also create custom models using the IMS CharacterCreator™ application. **FREE** head models are available for download from the IMS web site.

Product Pricing:

Please contact us at info@ims3d.com for pricing information.

If you require additional information on the IMS CharacterGenerator Studio™ MX Pro product please visit us at www.ims3d.com, or contact us at support@ims3d.com.